



WITH REDDOG THE DIFFERENCE IS CLEAR

Corporate Profile/Capability Statements.
Please visit www.reddogconstruction.com.au for additional information



RED DOG

Contents.

03. Our Business

04. Our Mission

- 05. » Our Vision
- 06. » Our Manifesto

07. Red Dog Capabilities

- 08. » Construction Management
- 09. » Residential and Commercial
- 10. » Civil Construction

12. Procedures and Policies

- 13. » Environmental Policy
- 14. » Quality Policy
- 15. » Occupational Health and Safety Policy.

16. Some of our Projects

17. Contacts

CONTENTS



Our Business.

Red Dog is a multi disciplined well established company that uses enhanced planning and diligence, construction and development control and accountability procedures to deliver a GOLD CLASS standard in Construction Services, in the Commercial, Civil, Industrial and Residential sectors.

Our industry experts have paved the way in delivering projects efficiently and to the highest possible standard in an extensive variety of formats across Australasia. Standing tall among construction companies in Brisbane, Perth, Adelaide and greater Australia, Red Dog is majority Indigenous owned business offering premier Commercial, Civil and Residential services in some of the most challenging locales in Australia.

With offices located in the Gold Coast Queensland, Perth Western Australia and Adelaide South Australia, the company is well established in all other states of Australia and reaches as far as the UK.

Red Dog is an integrated construction, civil and management business, Red Dog create sophisticated elegant structures and landscapes to a high standard by way of a comprehensive management and build processes.

Points Of Difference that under pin our operation:

- ✓ Remote, Rural and Urban Construction Specialists
- ✓ A unique company structure that promotes sustainable consistency in growth and production
- ✓ Fully integrated client liaison and communication systems
- ✓ A large pool of resources spanning multiple sectors from Civil, Asbestos, Management, In house design, Commercial and Residential delivery
- ✓ A strong commitment to Training, and the community particularly focusing on Indigenous prosperity
- ✓ Automated operating systems, giving us lightweight efficient process management
- ✓ Innovative and solution driven



Our Mission.

The Red Dog Mission is to provide enhancing Construction Services that consistently exceed client expectations, and meaningfully contribute to all of our stakeholders including provide legitimate avenues to success for our Indigenous members. We strive to deliver Gold Class, profitable and expansive construction solutions to the residential and commercial market place's.

Red Dog aspires to deliver our mission with an entrepreneurial flair and a passion for detailed exciting projects. Our projects are created to fulfil expansive design and engineering techniques with emphasis on individuality, prestige and sustainability with an iconic twist. We will deliver our mission with integrity, pride and responsibility to all involved. Delivering our objectives with commitment to high returns for all stakeholders, and an excellent working environment for all employees.

Red Dog is a, multidisciplinary professional services company that delivers a comprehensive array of technical and strategic services, including consulting, design, construction services, engineering, process development, and project and construction management to the building and construction industry. Red Dog has served clients for over 12 years and has project experience in countries around the world. We currently have a number of sophisticated projects currently under management and construction.



OUR VISION.

To be a pre-eminent supplier of technical and strategic services including consulting, construction services, design services, civil works, engineering, process development, labour hire and project and construction management to the building and construction industry.



OUR MANIFESTO.

We are an innovative organization committed to helping our clients achieve unprecedented and sustained GOLD CLASS results.

Our clients appreciate our added value, trust and communication, as well as our ability to transfer our expertise quickly, efficiently and safely.

RED DOG CAPABILITIES

Red Dog Capabilities.

What we do...

Red Dogs fully integrated services include the supply and management of highly skilled carpenters, plumbers, electricians, lighting consultants, designers, architects, pool specialists, landscapers and more, to undergo all of the below projects and more. Furthermore we can supply and install Pre Fabricated or Modular building to all sectors including the resource industry.

- ✓ Full design process
- ✓ Manufacture of Pre-Engineered Products
- ✓ Resource and Mining Accommodation and Facilities
- ✓ Renovation advice and application
(to rejuvenate and add value to your property)
- ✓ New homes
- ✓ Civil and Infrastructure
- ✓ Asbestos management and removal
- ✓ Landscaping and outdoor spaces
- ✓ House raising and additions
- ✓ Remote Infrastructure and facilities
- ✓ Commercial Construction
- ✓ Shop Fitting
- ✓ Building Maintenance
- ✓ Insurance Repairs

Red Dog specialise in the design, production, supply and construction of all types of buildings.

We have a pledge to provide our clients open communication, coupled with a wealth of knowledge gained from over 70 years of combined experience in the building industry. Underpinning this is our ability to service our customers varied needs. We predominantly focus on our clients needs, closely tracking cost, quality, safety, environment or IR issues, Red Dog assure our clients of a seamless project by utilising our superior systems and techniques.



CONSTRUCTION MANAGEMENT.

The Red Dog Construction Management practice maintains an integrated management and communication network that supports business unit objectives by developing and implementing strategies, optimising people resources, championing technology tools and bringing consistency across operations while ensuring a high level of certainty for safety, performance, quality, cost and schedule.

Red Dog Construction Management maintains an effective ability to plan, execute and complete projects by applying well-developed systems and programs driven by a philosophy of early construction involvement with a focus on facility start-up and innovative solutions.

- ✓ Acquisition advice
- ✓ Development Management
- ✓ Value Management
- ✓ Working together safely so there is “no harm” to people
- ✓ Alignment with project goals and client’s team
- ✓ Projects are execution driven
- ✓ An experienced leadership team
- ✓ Full capabilities in all elements of construction management
- ✓ Remote client portal for access anywhere
- ✓ Time Management
- ✓ Project and Audit Due Diligence
- ✓ Risk Management
- ✓ Ability to do construction management globally
- ✓ Front-end loading to minimize uncertainties
- ✓ Early implementation of construct-ability program
- ✓ Construction work packages
- ✓ Workface planning management program
- ✓ Effective integration of engineering, procurement, construction and commissioning
- ✓ Site progress assessment
- ✓ Contracting strategy to maximize local participation
- ✓ Materials management control and coordination
- ✓ Effective handover and commissioning planning and execution readiness for operation
- ✓ Independent Certification
- ✓ Feasibility studies
- ✓ Client Representation
- ✓ Tenant Advisory



RESIDENTIAL & COMMERCIAL.

Residential

Red Dog has built extensive experience and a high level reputation in supplying top end residential construction services for many years in various locations.

Red Dog's service and reliability is second to none, our clients are government, architects and land/home owners with high expectations for quality, reliability, sustainability and safety. We strive to exceed those expectations in all elements of our business. New clients will quickly realise our delivery standards are a higher class than our competitors. That's the reason we have repeat business from many of our clients.

Red Dog's qualified team take care of the whole project-from the initial planning stage until the day we hand over the keys, you need only deal with one company

Check out our Projects and Contact us to see why we will deliver on our promises. Red Dog is highly respected for its GOLD CLASS standards and craftsmanship. Taking on the requirements of its clients with integrity, a passion for architecture and high standards, to realise the projects full potential.

Red Dog's in house systems and attention to detail mean we can supply you with the perfect dream home or extension. That combined with our commitment to GOLD CLASS standards means you can rely on Red Dog to cover every residential need, including:

- ✓ Design and Construct
- ✓ New Homes
- ✓ Renovations
- ✓ Additional Living
- ✓ Equity building service's

Commercial

For years Red Dog has built on its reputation, building projects for Australians with friendly advice and expert design and construction services of the highest quality. We offer :

Complete Design and Construction services for all commercial and industrial projects including:

- ✓ Large and Small Scale,
- ✓ Factories, Workshops Warehouses, Offices, Showroom, Retail and
- ✓ Commercial Unit Developments
- ✓ Purpose built projects or speculative developments for sale or lease
- ✓ Resource sector facilities and camps

Using Red Dog for a complete design and construction package leads to a more streamlined process, without the excesses and losses and substantial additional effort associated with multi-organisational or consultant driven projects.

Red Dog's qualified team take care of the whole project-from the initial planning stage until the day we hand over the keys, you need only deal with one company.

Red Dog operate with a strong emphasis on safety, reliability, quality construction, an economical built solution and streamlined, efficient service – visit our Projects page to see the quality in the end results that our past, current and returning clients have been pleased to receive!

Red Dog's advantage as your complete package builder is to seamlessly integrate all of the required parts of your project with emphasis on:

- ✓ Pre project Consultation to Establish Feasibility,
- ✓ Full project documentation,
- ✓ Concept Work and Approvals,
- ✓ In House Design & Engineering
- ✓ Full Project Management to create
- ✓ In House production and supply in our Factory
- ✓ Streamlined Turn Key Projects.



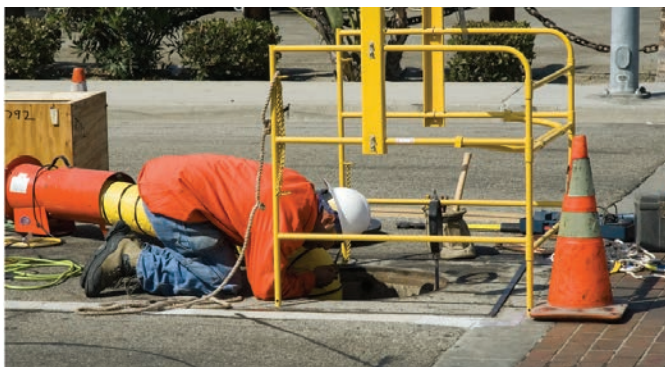
CIVIL CONSTRUCTION.

We are an innovative organization committed to helping our clients achieve unprecedented and sustained GOLD CLASS results.

With experience gained in the resource industry Red Dog have coordinated large civil projects of many types, consequently built a capable team. Whether you have a main roads and infrastructure project, a residential or industrial subdivision or you're in the mining sector, talk to us. You'll see that we have a strong track record of delivering on time and on budget across all different types of civil projects.

OUR CIVIL CAPABILITIES

With experience in the construction of land development projects and the delivery of Green Title and Strata lot sub-divisions. We have a diverse and professional team whose goal is to ensure projects are completed to the highest level of quality, on time and on budget.



BULK EARTHWORKS

Red Dog can perform all details of earthworks from bulk excavations of sand, clay, acid sulfate soil and piling spoil, to site remediation for heavy metals, hydro carbons and asbestos contaminants. We can also undertake final detail slab and footing excavations for industrial and commercial projects.

POWER, GAS & COMMUNICATIONS

Red Dog has a thorough knowledge and experience in the construction and installation of all forms of services including gas, communications, electrical and sewer to complex drainage and pumping structures.



UTILITIES

Our superior mechanical, electrical and technical capabilities allow us offer an integrated civil construction, electrical, fibre, copper and radio network deployment capability throughout Australia

Including Site Scoping and Survey, Pit & Pipe installation, excavation and directional drilling. Installation of equipment cabinets, towers and pillars. Coaxial cabling works for MDU and SDU. Cable hauling fibre, copper and electrical. Fibre splicing joint and cable preparation and relevant testing. Copper cable jointing, device and equipment installation including commissioning and integration, cable hauling fibre, copper and electrical integration.

“YOU’LL SEE THAT WE HAVE
A **STRONG TRACK RECORD OF
DELIVERING ON TIME AND ON
BUDGET** ACROSS ALL DIFFERENT
TYPES OF CIVIL PROJECTS.”

ASPHALT, CONCRETE & ROADS

We have vast experience in the construction of car parks to major roads, including all forms of brick, concrete and asphalt paving. We pride ourselves in delivery a quality product and professional finish.



SEWER, WATER & DRAINAGE

Our Civil team are able to undertake all sewer, water and drainage work. Our expertise includes, but is not limited to, the following:

- Concrete / PVC Pipework
- Subsoil
- Pump Stations
- Swale / Basin Construction
- Gross Pollutant Traps
- Interceptors
- Box Culverts
- Soakwells
- Stormtech and Atlantis Cells

PROCEDURES & POLICIES



procedures and policies.

The Managing Director of the company who have entrusted the execution of health and safety standards implementation to the managers and supervisors have the final responsibility on our environmental compliance.





Environmental Policy.

Red Dog is committed to the care of the environment. We design, operate and maintain our operations to reduce any harm to the environment.

We Promise:

- ✓ To inform and educate all our stakeholders, employees and associates about our environmental policies and goals.
- ✓ To follow all government rules relating to the environment.
- ✓ To follow all standard industry practices.
- ✓ To be pro-active in improving upon our efforts to minimize harm to the environment and mto regularly update our objectives for the protection of the environment; and rely the same to our stakeholders. Reduce waste.
- ✓ Adhere to the system of environmental management and fulfill all the requirements of ISO 14001.
- ✓ Regularly educate our stakeholder about our new goals related to environmental management.
- ✓ A continuous effort to cater to the needs of customers and all our stakeholders.



Quality Policy.

Maintaining of quality at Red Dog is the responsibility management, employees and all stakeholders.

Our quality goals are aimed at achieve:

- ✓ Constant improvements in all fields of our operations which include designing, manufacturing, executing and serving customers.
- ✓ Highly trained personnel in all fields.
- ✓ Dealing with suppliers adhering to our high standards in quality.
- ✓ Adhering to the highest standards of work culture, standard policies and procedures.
- ✓ Self examination to maintain our quality objectives and management of quality by feedback from customers and independent agencies.
- ✓ Internal and external audits to examine our practices and activities.
- ✓ Regular feedback from customers to improve upon, maintain quality and cater to their needs.
- ✓ Adherence to all state and national rules and other practices in the industry.
- ✓ Audit of quality to maintain the fitness of our fleet.
- ✓ Upgrading of procedures to comply with ISO 900 and improving upon business efficiency.
- ✓ A continuous effort to cater to the needs of customers and all our stakeholders. The CEO/ Managing Director of the company who have entrusted with the execution of quality management system to the managers and supervisors have the final responsibility on our environmental compliance.



Occupational Health and Safety Policy.

Red Dog management duty bound to provide its employees a working environment free from any health risks and hazards.

We strongly believe in identifying and protecting our employees and other associates from risks and hazards.

We provide our senior employees with information and education to make them aware of our health and safety policies. We maintain compliance standards and regularly go beyond the standards in all our operations.

We put very serious efforts to:

- ✓ Understand the requirements of our employees and contractors regarding safer work environments.
- ✓ Make sure that all measures to maintain performance are taken.
- ✓ Improve upon our performance in prevention of accidents and in health and safety.
- ✓ Comply with all the state and government rules, codes of best practice, and also the standard industry practices related to occupational health and safety.

OUR PROJECTS

Some of Our Projects.



Nebo Mining Camp and Mess Hall, QLD Australia
Designed for purpose we installed these accommodation and mess hall buildings at a private mining camp in Nebo near Mackay QLD



Laverton, Gold Mine, WA Australia
Supply and construction of a Mine Worker Accommodation. This project saw an extension to Barrick Golds existing accommodation village, increasing the site capacity by 144 en suite rooms. Believe it or not but we were building one of these buildings every 30 days.



Bagots Well, Mid-North SA, Australia
Remote 4 bed home, built in a traditional design and completed in under 16 weeks.



Huth st, Labradore, QLD Australia
This renovation development consisted of 12 units, all 2 bedrooms and in very poor condition. The building had an interesting past having been a hostel then serviced apartments then rentals.



Light Box Building, Woking UK
The Architecturally inspired building, offers a unique exterior finish of tarnished Aluminum and weathered timber. The Light box is a designated exhibition, art and educational building commissioned by the local authority of Woking UK.



Mort St, Toowoomba, QLD Australia
An ideally located development situated just 5 minutes from Toowoomba CBD. This project comprises of 4 Townhouses each with 4 bedrooms and 2 bathrooms. The homes will set the benchmark in Toowoomba for town house design. Spacious and well presented set among a mature area of the city, residents of these homes will benefit from great schools, shops and Toowoomba's famous parks within walking distance, they will also enjoy the strong growth of the greater Surat Basin region with easy access to other parts of South and South East Queensland the city is expected to grow from 150,000 to 250,000 over the next 15 years making it Australia's 2 biggest inland city next to Canberra.



Red Dog Group

Web www.reddoggroup.com.au

Email sales@reddoggroup.com.au

Tel (+61) 07 5529 8621

Queensland

Construction Management

PO Box 3142

Helensvale Town Centre

Queensland 4212